

# Connecting Your Campus > UCD

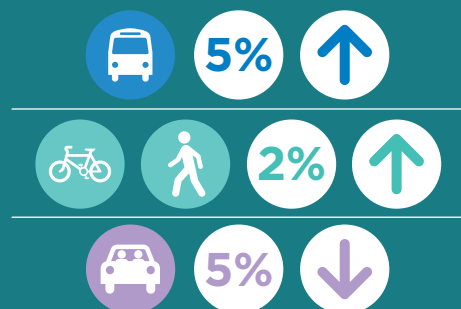


## Commuting Strategy in UCD

Since 2011, University College Dublin, the National Transport Authority and Dún Laoghaire Rathdown County Council have been working together on the UCD Commuting Strategy Implementation Group.

The group meets on a quarterly basis to discuss transport and planning issues, focussed on the campus and its environs. The primary objective of the group is to review the implementation of UCD's Commuting Strategy.

### Student Travel Choices 2011 - 2014



Source: UCD Annual Commuting Surveys 2011-2014

29,000

Students and staff commute to UCD

79%

of UCD students in 2014 walk, cycle or use public transport

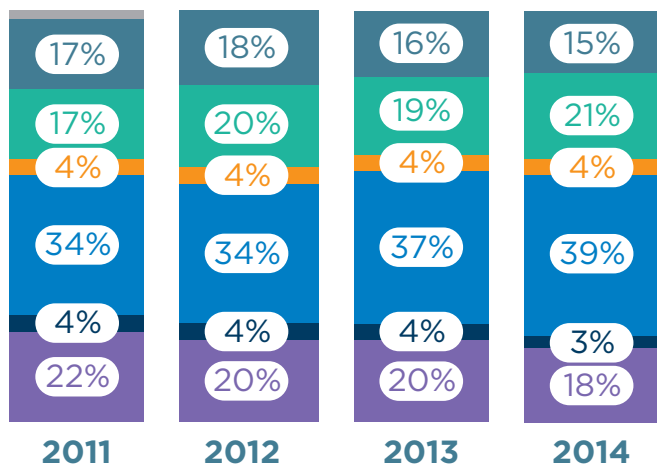
51%

of UCD staff walk, cycle or use public transport

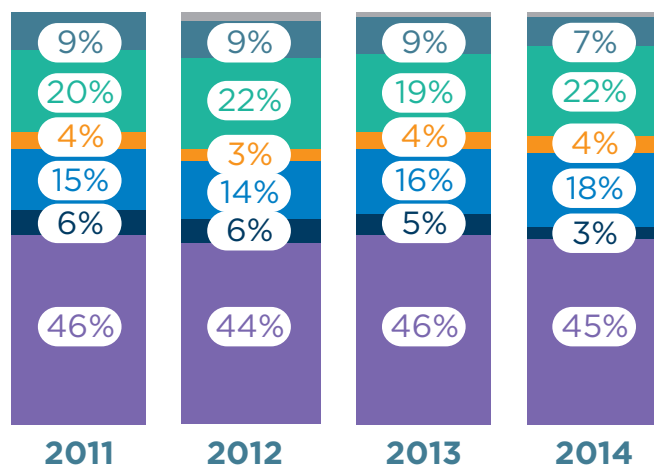


## Transport Modes Trends

### Student Transport Modes



### Staff Transport Modes



Travelling by bus is the most popular transport mode for **UCD students**

Source: UCD Annual Commuting Surveys 2011-2014



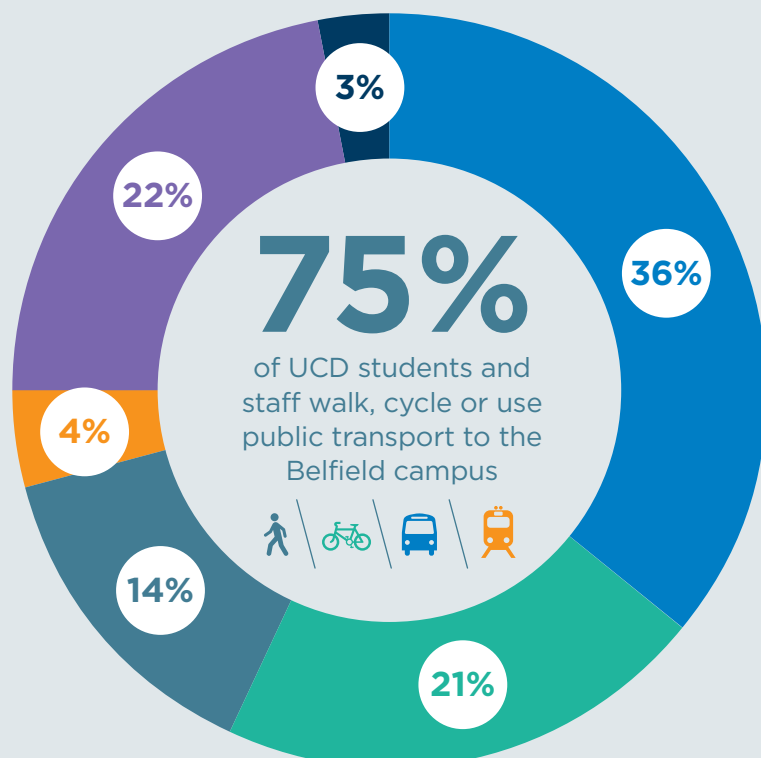
Between 2004 and 2014, the car mode share for **UCD staff** has declined from 66% to 48%



## Overall Transport Modes Usage 2014

- 14% UCD students and staff commute by **walking**
- 21% UCD students and staff commute by **cycling**
- 36% UCD students and staff commute by **bus**
- 4% UCD students and staff commute by **rail**
- 22% UCD students and staff commute by **car**
- 3% UCD student and staff commute as a **car passenger**

Source: UCD Annual Commuting Survey 2014.



75%

of UCD students and staff walk, cycle or use public transport to the Belfield campus







# Smarter Travel in UCD



This programme works with students and employees to facilitate more sustainable travel choices, resulting in:

- › better access
- › enhanced student and employee wellbeing
- › reduced costs and more effective parking management

Prior to this scheme, UCD was involved in the Smarter Travel Workplaces programme which focused on smarter travel for campus staff.

Since the launch of the Smarter Travel Campus programme, UCD has taken part in annual walking and cycle promotion events for staff and students. In Orientation Week, activities to promote smarter travel have been promoted, supported by the National Transport Authority.

UCD is in the process of updating their website and other information pieces for staff and students to ensure that information on how to get to campus is readily available.

This includes information on where to find bicycle parking, showers, lockers, the new shuttle bus to the DART and information on how and where to find out when your next bus is due.

UCD is now putting in place a Smarter Travel Implementation group to represent a cross section of staff and students. This group will include representatives from areas such as Human Resources, Facilities, Students Union, Health Promotion, Sports Office, Campus Services, Communications, International Students Office and other relevant areas, for example, students and lecturers from relevant courses. The purpose of this group will be to implement measures to encourage smarter travel among staff and students based on opportunities identified in the College's annual travel survey.

In March 2013, the National Transport Authority launched the Smarter Travel Campus programme in UCD.

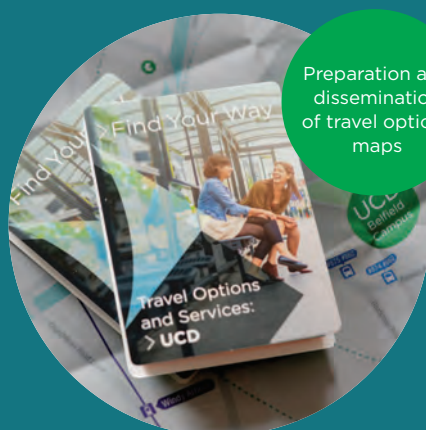
Smarter Travel Campus is a public awareness programme working with a range of Third Level institutions around Ireland to implement campus travel plans.



## Measures Introduced

### Transport Information

- › Installation of public transport information electronic display at the UCD library
- › Provision of multiple Real Time Passenger Information on the Stillorgan Road adjacent to the UCD entrance and at the main campus bus terminus
- › Preparation of public transport route network maps
- › Preparation and dissemination of travel options maps for students



Preparation and dissemination of travel options maps



Public transport information display at the UCD library

### Cycle and Pedestrian Information

- › Preparation and dissemination of pedestrian and cycle journey time maps



Real Time Passenger Information sign - N11



Clonskeagh Road cycle counter

### Bus Service Changes

- › New hourly service between UCD and Rathmines
- › Extra 145 services operating from UCD bus terminus in the evening
- › Construction of a bus gate facilitating bus and cycle movement between Foster's Avenue and N11
- › Rerouting of the 17 Dublin Bus route through new bus gate during peak periods, allowing for up to 7 minutes time saving and increased reliability
- › Introduction of a new shuttle bus service between UCD and the Sydney Parade DART Station



New hourly 142 bus service between UCD and Rathmines



Construction of a bus gate between Foster's Avenue and N11

### Leap Card

- › Adult and Student Leap cards are available to purchase on the UCD campus. In September and January each year the Student Leap Card team runs promotions and extra sign-up desks for Student Leap cards in key locations on campus
- › Approximately 9,000 Student Leap Cards were sold during the last academic year in UCD



Shuttle bus service between UCD and Sydney Parade Dart Station



Approximately  
**9,000**  
Student Leap Cards  
sold during the last  
year in UCD

Leap

### Cycle Infrastructure

- › Provision of c.800 new cycle parking sheffield stands
- › Upgrade of cycle infrastructure on the Stillorgan Road
- › Improvement of walking and pedestrian environment proximate to the UCD main entrance
- › Construction of UCD to Windy Arbour LUAS stop cycle route
- › Construction and operation of cycle counters on Clonskeagh Road and N11 adjacent to UCD



Provision of c.800 new cycle parking sheffield stands



Upgrade of cycle infrastructure on the Stillorgan Road

### Car Parking Management

- › Agreement to restrict the amount of car parking in UCD at 3,600 spaces
- › Working to reduce and consolidate car parking facilities and introduce car parking demand management measures

### GoCar: Pay-as-you-go car rental

- › There are 2 Go Cars and 3 dedicated Go Cars spaces provided on the UCD campus, in the car park at the Tierney Building



Construction of UCD to Windy Arbour LUAS stop cycle route



Bike Day 2014 on the UCD Campus