

The Rail Census

Data Qualification

- ▲ The Rail Census is a snapshot of rail usage on a single day. While this survey is broadly representative of a typical weekday it is important to remember that it does not present systematic use or provide information on variations in rail usage by day of week or seasonally.
- ▲ Variation in rail usage from one day in a particular year to another day in the next year may be influenced by a range of factors. Some of these factors include operational changes such as amendments to timetables and frequencies of services, while other factors are outside the control of the operator, such as weather or the macroeconomic environment.
- ▲ Although providing a robust annual trend, the data presents a snapshot only and does not provide a full picture of rail usage over the course of an entire year. The findings in this report should be interpreted in this context.

The National Heavy Rail Census

- ▲ The National Heavy Rail Census, funded by the National Transport Authority, records rail patronage at every train station in the Country on one day of the year.
- ▲ The 2018 Census is the seventh National Census. Prior to 2012, the Census was carried out in the Greater Dublin Area (GDA) only.
- ▲ The Census was conducted by surveyors counting the number of individuals boarding and alighting each service at each station for an entire day on 15th November 2018.
- ▲ The month of November is chosen as a month which is unaffected by holidays and when most places of work and education are in full session.
- ▲ Operating conditions on the day of the census were normal with no service delays, cancellations or disruptions on the rail network. Therefore it is reasonable to conclude that the Census was undertaken on a generally representative day.



For Further Information:

Media enquiries:
Dermot O’Gara
T: +353 0 1 8798346
National Transport Authority
Dún Scéine
Iveagh Court
Harcourt Lane
Dublin 2
D02 WT20



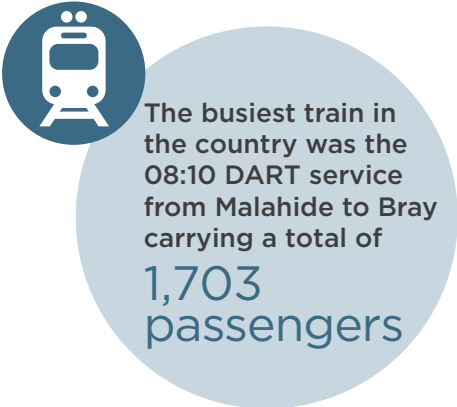
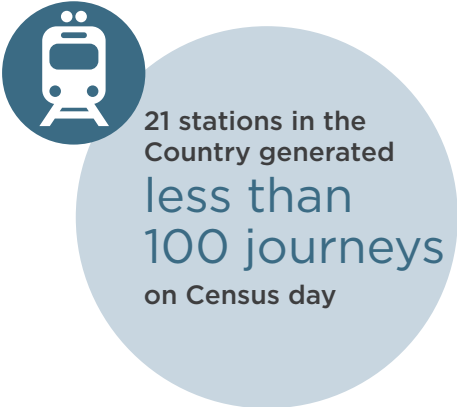
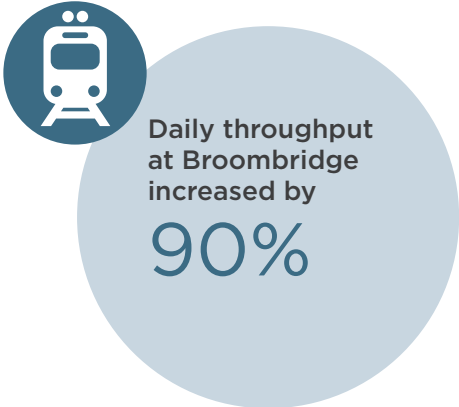
Summary of the National Heavy Rail Census Carried out in November 2018

- Bulletin Topics:
- The Rail Census 2018
 - Highlights of the National Rail Census 2018
 - The National Rail Census 2018 v 2017



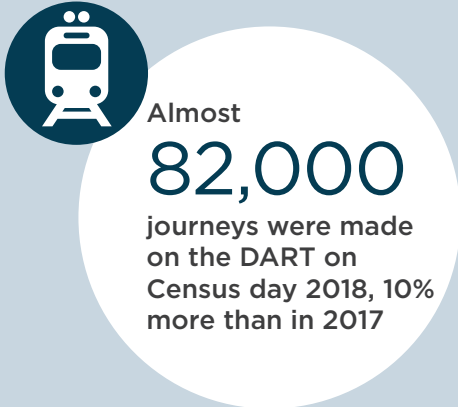
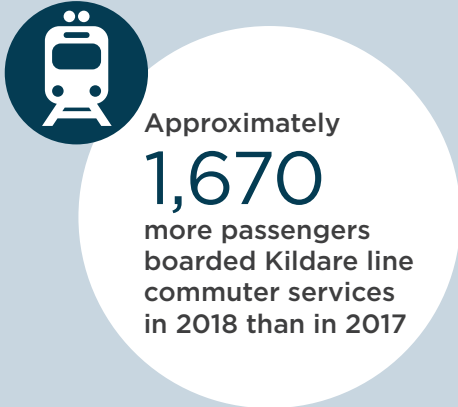
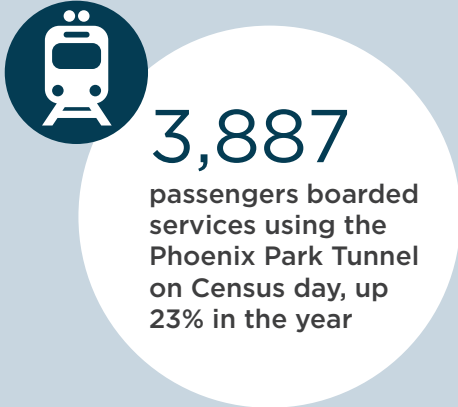
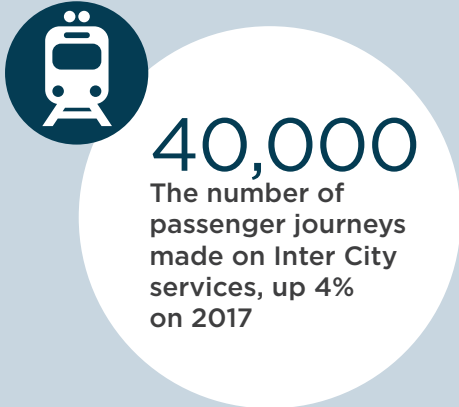
Highlights from the 2018 Rail Census

- ▲ 178,058 journeys were taken on the day of the Census.
- ▲ As in 2017, 12 stations handled in excess of 5,000 passengers. Connolly, Pearse, Heuston and Tara continued to be the busiest stations handling one third of all passengers on census day.
- ▲ Outside of Dublin, Kent Station in Cork City and Bray in Wicklow feature in the top ten busiest stations in terms of passenger traffic.
- ▲ Malahide is now the 6th busiest station in terms of boardings, having been ranked 10th in 2017 and 12th in 2016.
- ▲ Daily throughput at Broombridge increased by 90% since the introduction of LUAS Cross City Services in December 2018. Broombridge Station offers interchange between the LUAS Green and Maynooth Rail lines.
- ▲ The 10 busiest stations on the network accounted for just under half (46%) of all passengers movements on the network.
- ▲ 21 stations in the Country experienced less than 100 journeys per day. This number has fallen by 34% since 2012. Of the quietest stations, 8 experienced less than 30 journeys.
- ▲ Birdhill was the least used station on the network with only 3 boardings during the entire day.
- ▲ 25% of stations experienced less than 200 daily journeys.
- ▲ The busiest train in the country on Census day was the 08:10 DART service from Malahide to Bray, with a total of 1,703 passengers using this service. The peak passenger load on this service occurred between Clontarf Road and Connolly when 1,153 passengers were on board the train.
- ▲ The busiest Commuter service was the 08:02 Maynooth to Bray train which carried 1,070 passengers. 917 passengers were on board the train between Ashtown and Broombridge stations.



The National Rail Census 2017 v 2018

- ▲ Overall the number of daily journeys on the rail network increased by 6% on 2017.
- ▲ DART accounted for 46%, Commuter services for 30% and Intercity for 22% of all journeys made on Census day.
- ▲ 81,905 journeys were made on the DART on Census day 2018, 10% more than in 2017.
- ▲ Approximately 1,668 more passengers boarded commuter services on the Kildare line in 2018 than in 2017.
- ▲ 3,887 passengers boarded services operating via the Phoenix Park Tunnel on Census day 2018, up 23% on 2017.
- ▲ As in 2017, the greatest passenger flow during the morning peak hour was on DART services travelling towards Dublin between Killester and Clontarf Road.
- ▲ There were increases in boardings on DART services in every period between 06:00 -18:00.
- ▲ In 2018 as in 2017 the peak hour for boarding on DART, Maynooth and Cork Commuter lines was between 08:00-09:00. On the Kildare, Northern and South Eastern lines, the peak hour was 07:00-08:00.
- ▲ Journeys in the GDA account for approximately 85% of total journeys undertaken nationally on Census day – this remains unchanged since 2013.
- ▲ 39,939 passenger journeys were made on Inter City services in 2018, up 4% on 2017.
- ▲ 5,975 passenger journeys were made on Cork Commuter lines on Census day, an increase of 1% on 2017.
- ▲ There was a 3% decrease in cross border patronage on the Enterprise Service between 2017 and 2018.



Passenger Journeys 2018

