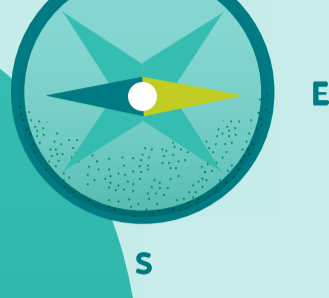


dublin

CITY CENTRE ON AN AVERAGE MORNING

Canal Cordon Count 2015
Trends in travel to the City
Centre 2006 to 2015

Where

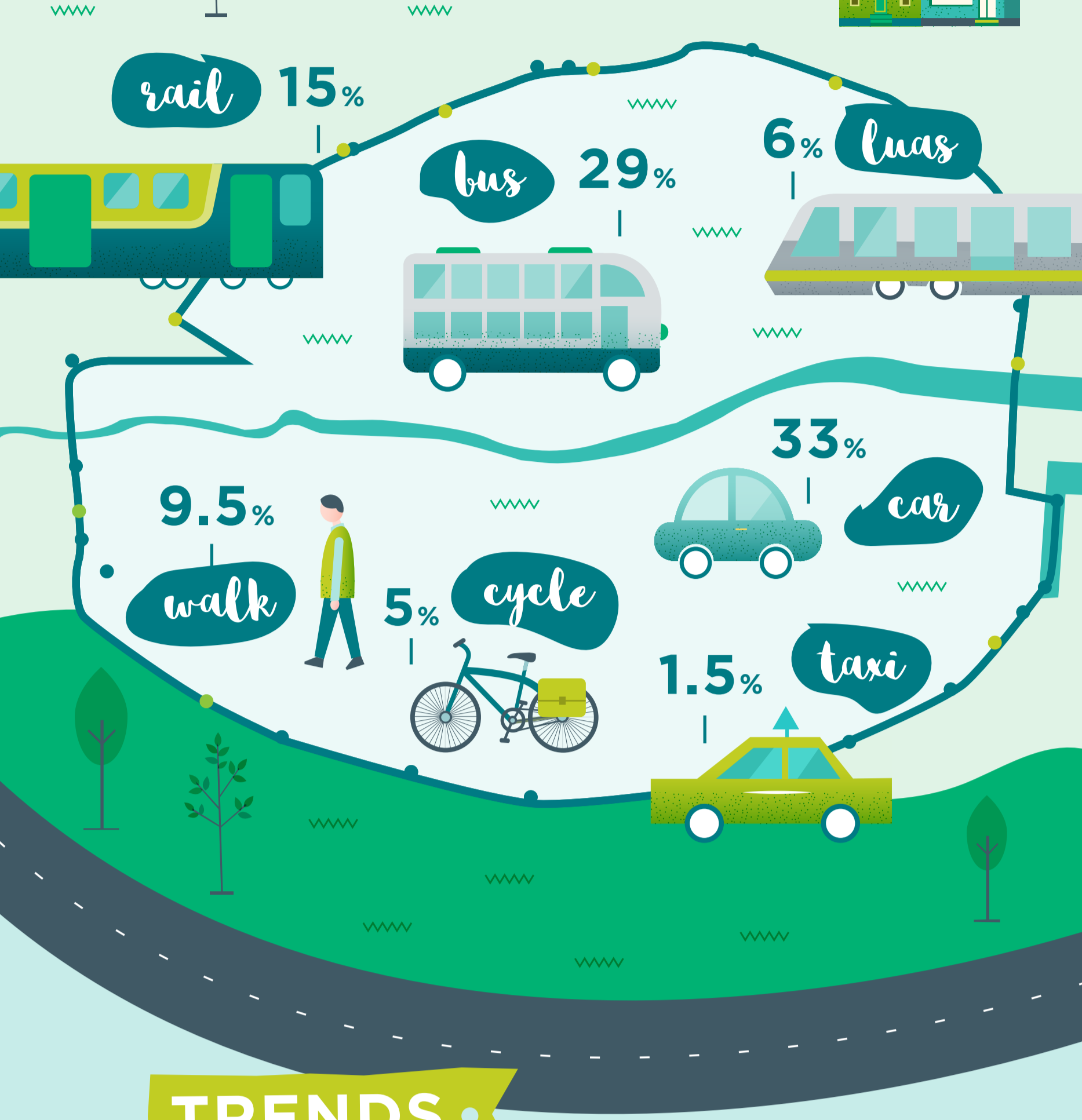
33 locations around
the cordon formed
by the Royal and
Grand Canals.

When

07:23

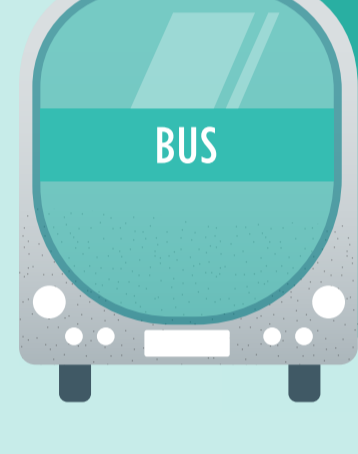
The counts are conducted during
the month of November each year.
Since 1997 the counts have been
conducted over the period between
07:00 and **10:00**.

• IN 2015 •



TRENDS •

• 2015

COMPARED
TO 2014BUS PASSENGER
NUMBERS UP BY

1.6%

INCREASE IN IRISH
RAIL NUMBERS BY

18.7%

LUAS
NUMBERS
UP BY

7.1%

CAR NUMBERS SHOW
NEGLECTIBLE INCREASE,
EFFECTIVELY STATICWALKING SHOWS A DECREASE OF
CYCLING SHOWS AN INCREASE OF

5%

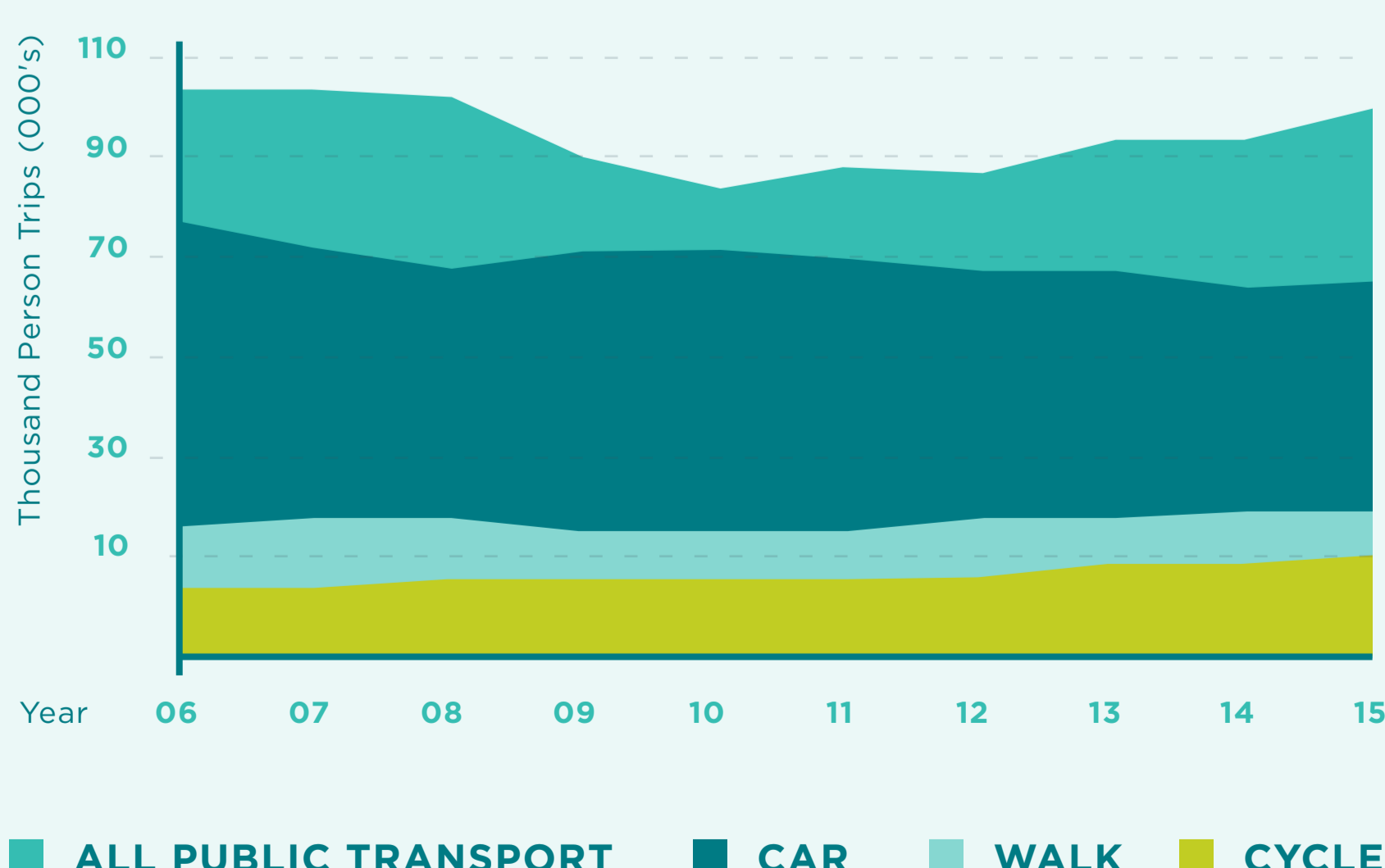


199,943

PEOPLE CROSSED
THE CANAL CORDON
IN 20153.8% higher than 2014
and back to 2008 level

• TRENDS •

2006 - 2015


■ ALL PUBLIC TRANSPORT
■ CAR
■ WALK
■ CYCLE