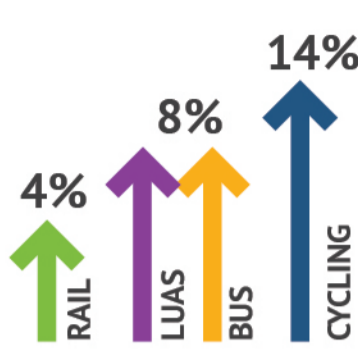


GETTING INTO DUBLIN CITY CENTRE ON AN AVERAGE MORNING



2013

CONTINUES THE TREND OF THE PAST 3 YEARS WITH AN INCREASE IN NUMBERS OF PUBLIC TRANSPORT PASSENGERS AND OF CYCLISTS



Three modes of public transport and cycling all showed increases from 2012 numbers

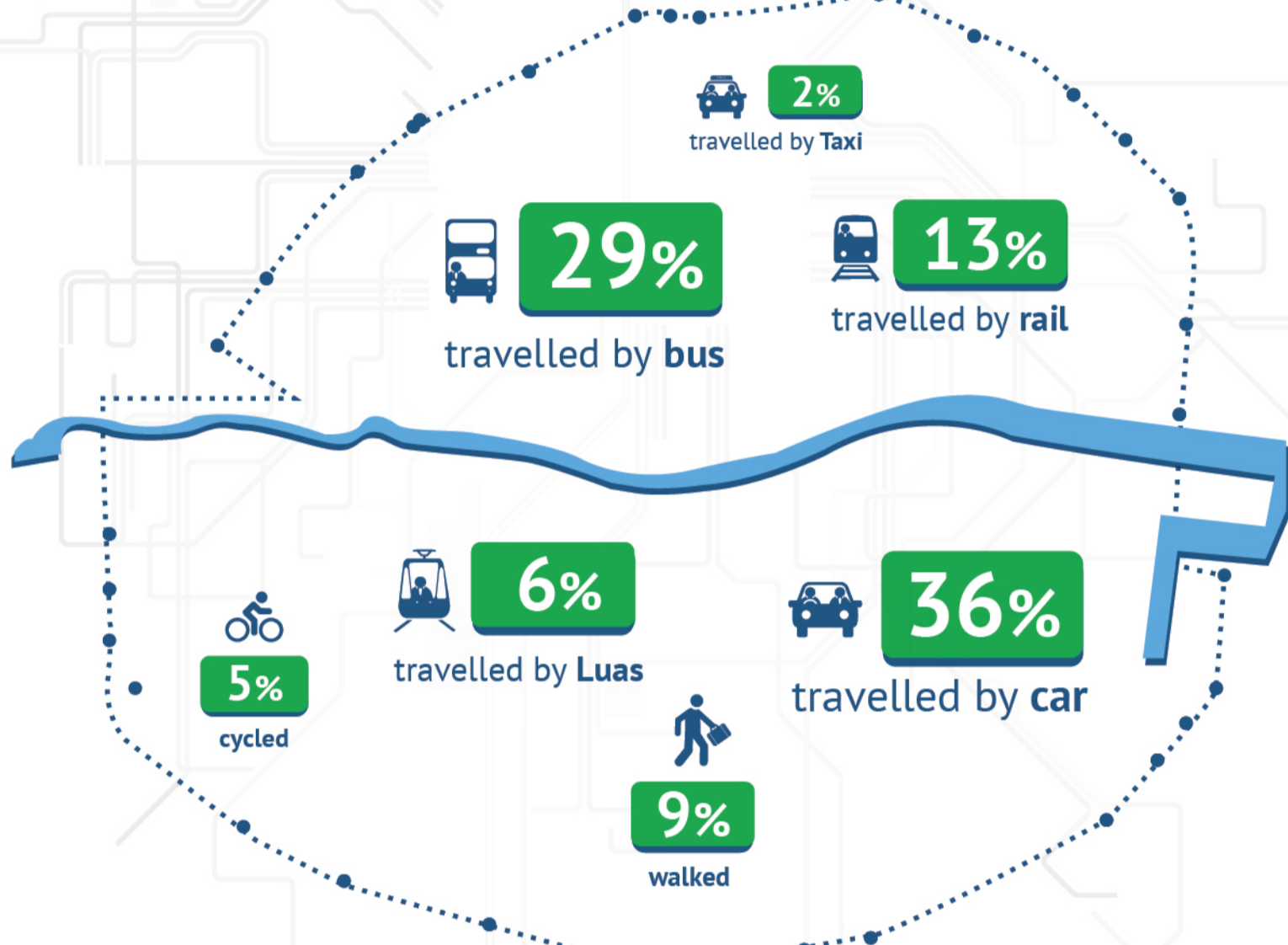
7%



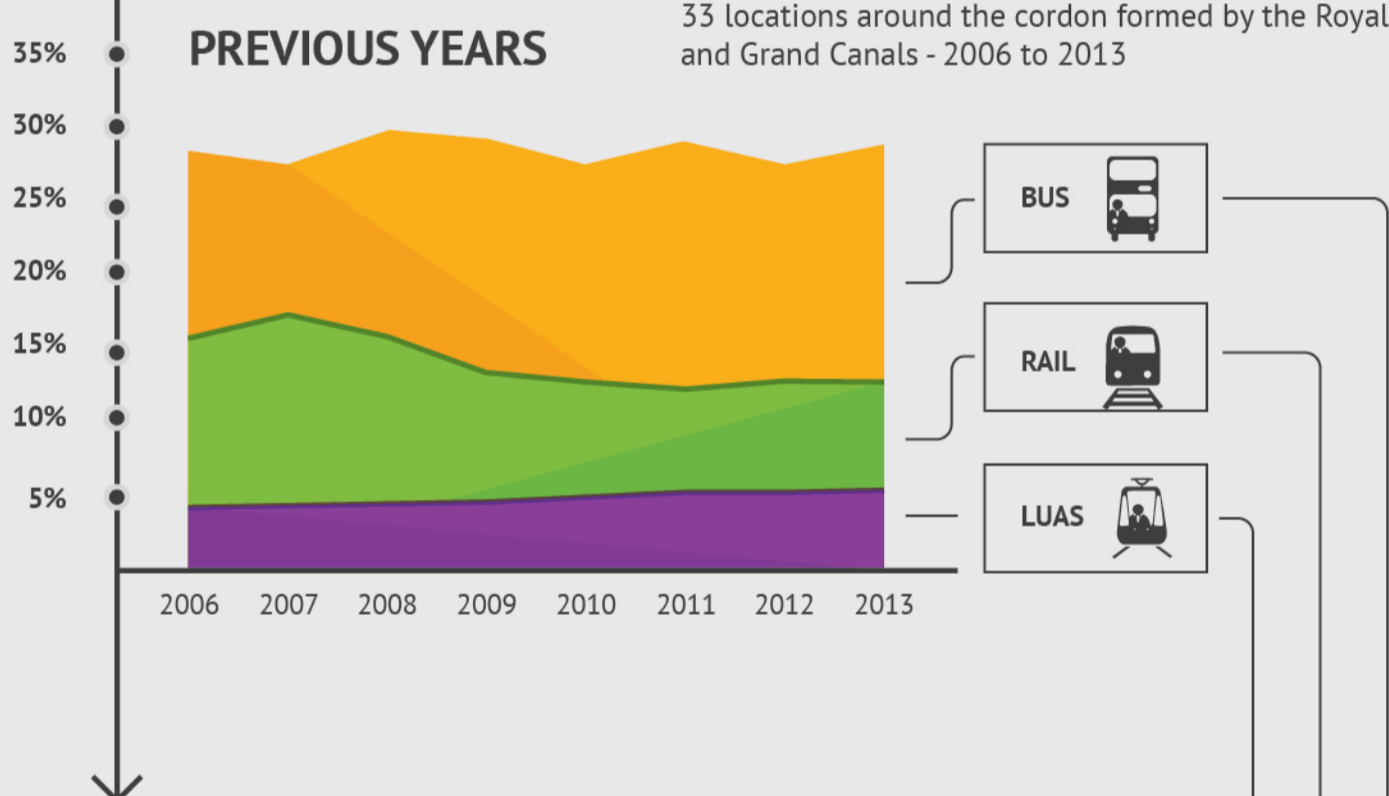
Increase between 2012 and 2013 in number of public transport users

Since 1980, Dublin City Council (DCC) has been conducting traffic counts at 33 locations around the cordon formed by the Royal and Grand Canals. The counts are conducted during the month of November, between 07:00 and 10:00, each year.

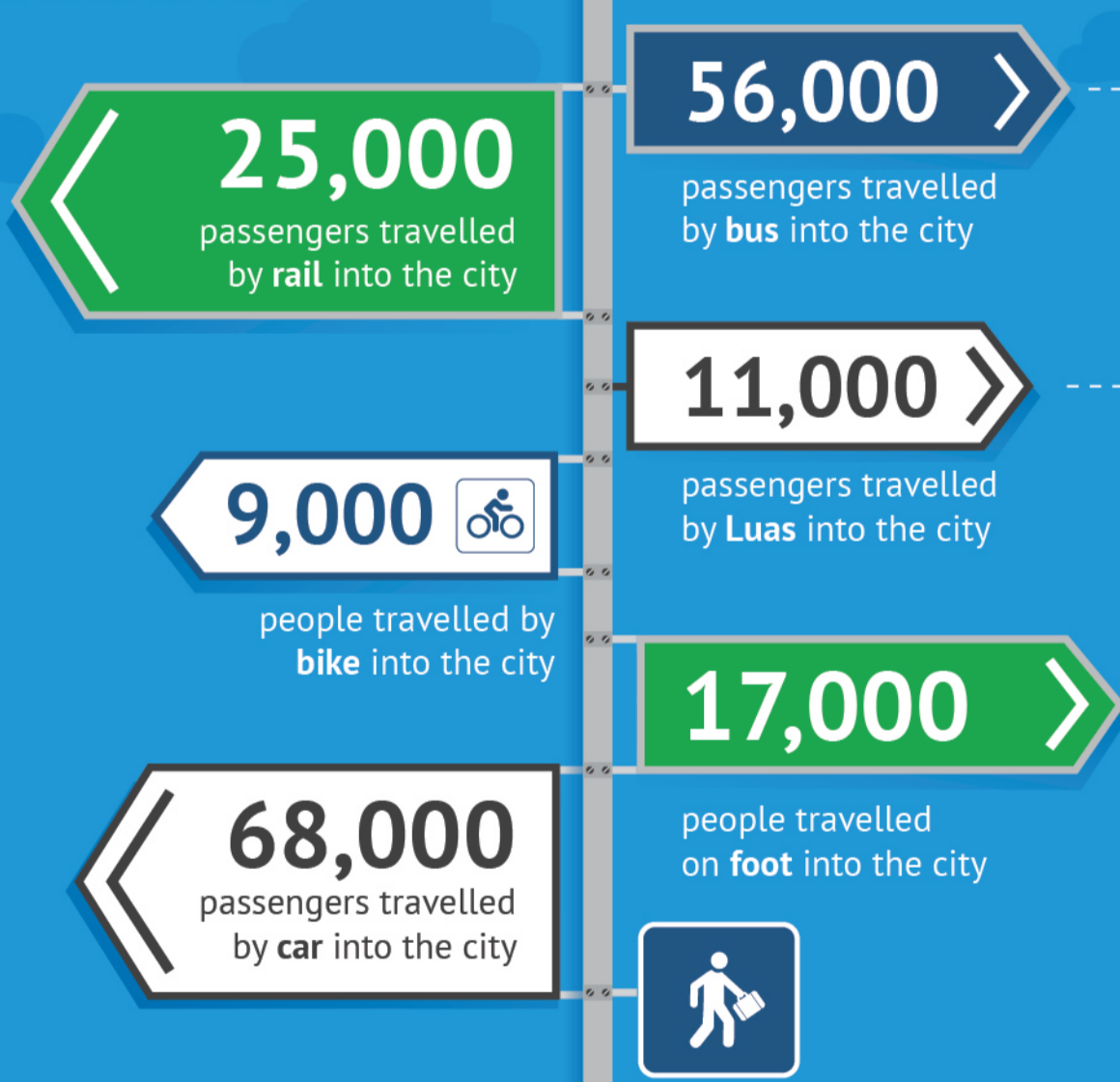
IN 2013



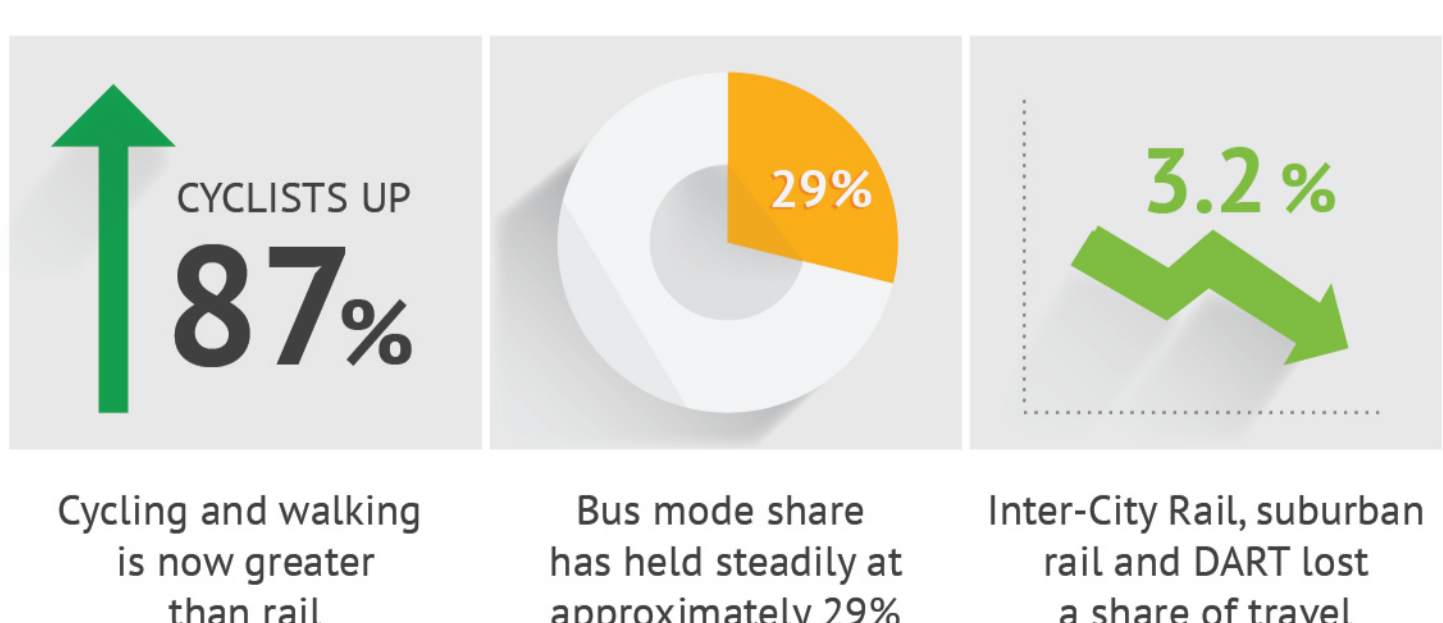
PREVIOUS YEARS



ON AN AVERAGE NOVEMBER MORNING IN 2013



TRENDS 2006 TO 2013



For more information, visit transportforireland.ie

Data retrieved by the National Transport Authority and Dublin City Council | Canal Cordon Report 2006-2013