

# The Rail Census

## Data Qualification

The Rail Census is a snapshot of rail usage on a single day. While this survey is broadly representative of a typical weekday it is important to remember that it does not present systematic use or provide information on variations in rail usage by day of week or seasonally.

Variation in rail usage from one day in a particular year to another day in the next year may be influenced by a range of factors. Some of these factors include operational changes such as amendments to timetables and frequencies of services, while other factors are outside the control of the operator, such as weather or the macroeconomic environment.

Although providing a robust annual trend, the data presents a snapshot only and does not provide a full picture of rail usage over the course of an entire year. The findings in this report should be interpreted in this context.

## The National Heavy Rail Census

- ✂ The National Heavy Rail Census, funded by the National Transport Authority, records rail patronage at every train station in the Country on one day of the year.
- ✂ The 2016 Census is the fifth National Census. Prior to 2012, the Census was carried out in the Greater Dublin Area (GDA) only.
- ✂ The Census was conducted by surveyors counting the number of individuals boarding and alighting each service at each station for an entire day on 17th November 2016.
- ✂ The month of November is chosen as a month which is unaffected by holidays and when most places of work and education are in full session.
- ✂ Operating conditions on the day of the census were normal with no severe delays, cancellations or disruptions on the rail network. Therefore it is reasonable to conclude that the Census was undertaken on a generally representative day.

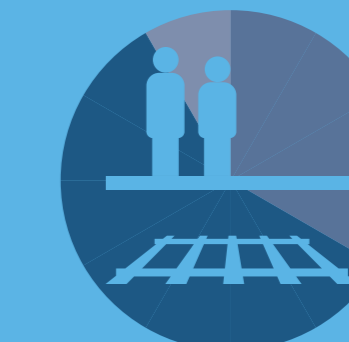


Statistical Bulletin Number: 06/2017  
September 2017



## Summary of the National Heavy Rail Census

Carried out in November 2016



### Contents:

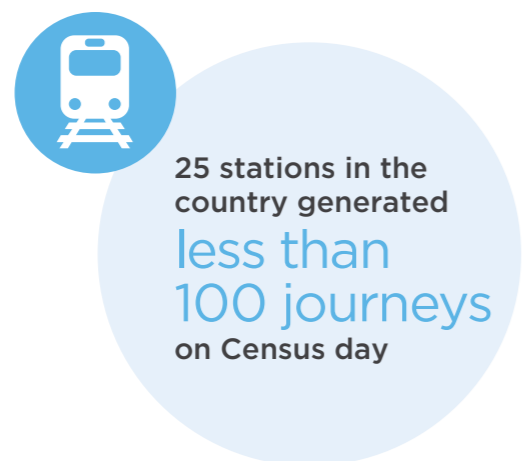
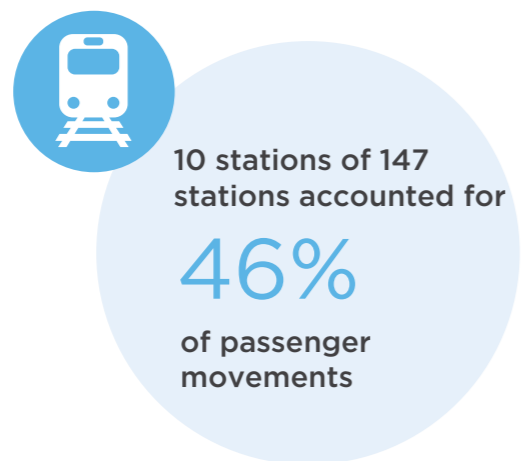
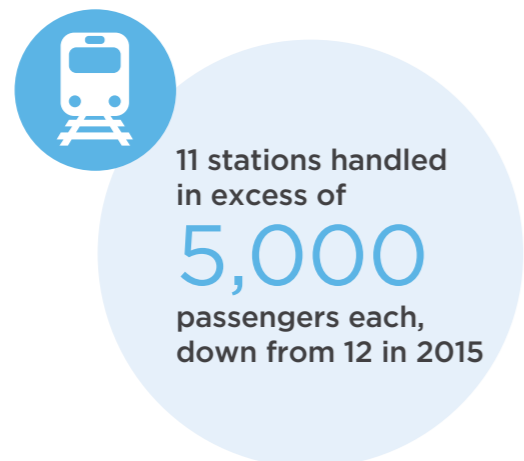
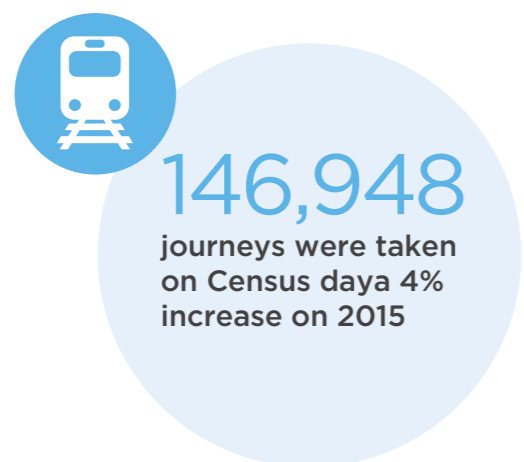
- The Rail Census 2016
- Highlights of the National Rail Census 2016
- The National Rail Census 2015 v 2016

National Transport Authority  
Dún Scéine  
Harcourt Lane, Dublin 2

t: +353 1 879 8300  
f: +353 1 879 8333  
www.nationaltransport.ie

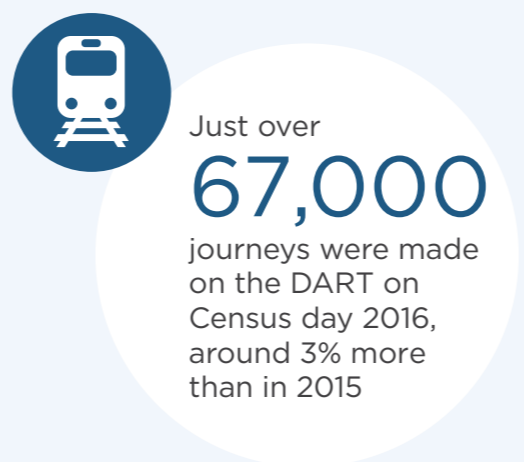
# Highlights from the 2016 Rail Census

- 146,948 journeys were taken on the day of the Census.
- 11 stations handled in excess of 5,000 passengers, down from 12 in 2015. Connolly, Pearse, Heuston and Tara continued to be the busiest stations handling one third of all passengers on census day.
- Outside of Dublin, Kent Station in Cork City and Bray in Wicklow, feature in the top ten busiest stations in terms of passenger traffic.
- Grand Canal re-entered the top 10 stations for boardings, having fallen to 11th in 2015. It is ranked 5th for alightings.
- The 10 busiest stations on the network accounted for just under half (46%) of all passenger movements on the network.
- There are 25 stations in the Country which experienced less than 100 journeys per day. This has fallen by 22% since 2012. Of the quietest stations, 12 experienced less than 30 journeys.
- Carrick-on-Suir was the least used station on the network with only 3 boardings during the entire day.
- 29% of stations experienced less than 200 daily journeys.
- For the fifth year running, the busiest train in the Country on Census day was the 08:02 DART service from Greystones to Malahide, with a total of 1,204 passengers using this service. The peak passenger load on this service occurred between Blackrock and Lansdowne Road.
- The busiest Commuter service was the 06:47 Drogheda to Pearse train which carried 865 passengers.



# The National Rail Census 2015 v 2016

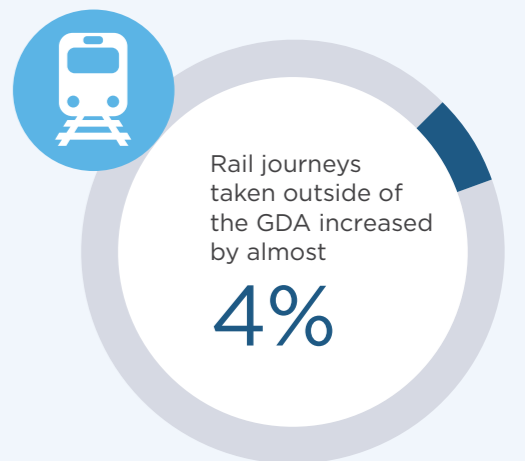
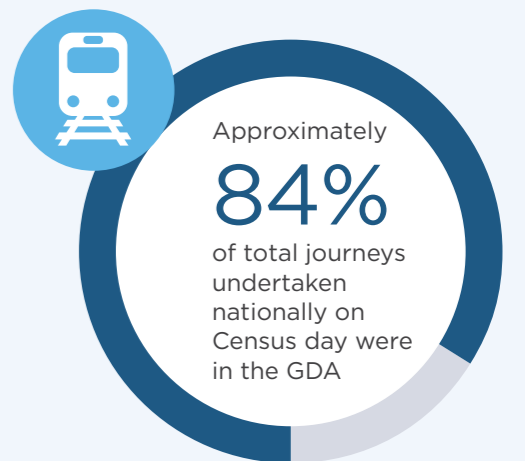
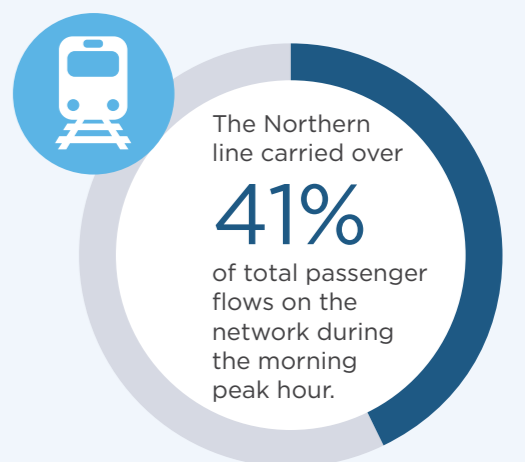
- Overall the number of daily journeys on the rail network increased by 4% on 2015.
- DART accounted for almost 46%, Commuter services for 32% and Intercity for 22% of all journeys made on Census day.
- 67,123 journeys were made on the DART on Census day 2016, around 2,218 or 3% more than in 2015.
- Approximately 478 more passengers boarded services to Heuston in 2016 than in 2015.
- The Northern line (including DART) carried 41% of total passenger flows on the network during the morning peak hour, down from 43% in 2015.
- The greatest passenger flow during the morning peak hour was on DART services travelling towards Dublin between Clontarf Road and Connolly.
- There was an increase in boardings on Heuston Commuter services in the 07:00-08:00 period as well as in the 09:00-10:00 period.
- In 2016 the peak hour for boarding on DART and Kildare line services was between 08:00-09:00. On the Northern and South Eastern lines, the peak hour was 07:00-08:00.
- Journeys in the GDA account for approximately 84% of total journeys undertaken nationally on Census day.
- The numbers of rail journeys taken outside of the GDA on Census day 2016 increased by almost 4% relative to 2015.
- Almost 5,600 passenger journeys were made on Cork Commuter lines on Census day, an increase of 14% on 2015.
- There was a 26% increase in cross border patronage on the Enterprise Service between 2015 and 2016.



# Passenger Journeys 2016



	DART	<b>46%</b>
	Commuter Services	<b>32%</b>
	Intercity	<b>22%</b>



Further Information:  
Media enquiries  
**Sara Morris**  
t: +353 (0)1 8798346