

SOME OF THE STATE SUPPORTS AVAILABLE TO THE SPSV INDUSTRY

There are a range of supports for self-employed SPSV licence holders who are receiving the Pandemic Unemployment Payment (PUP) and who are looking to restart their business. Recipients of the payment can earn up to €480 gross income per month (before tax and PRSI) minus expenses, while retaining their full PUP entitlement. Expenses must be directly related to the business in line with Revenue rules.

Non-business related expenses or those of a capital nature are excluded.

Further information regarding the PUP can be found [here](#).



ENTERPRISE SUPPORT GRANT

The Enterprise Support Grant (ESG) is available to assist eligible persons who closed their COVID-19 PUP on or after 18 May 2020, and reopened their business.

This one-off grant of up to €1,000 can be claimed in respect of business restart costs incurred. In the context of the SPSV industry, sample costs include the purchase of:

- cashless payment facilities;
- personal protective equipment;
- cleaning materials;
- fuel;
- vehicle repairs; and
- insurance costs.



Further information on eligible costs and how to apply can be found [here](#).

COVID-19 PART-TIME JOB INCENTIVE SCHEME FOR THE SELF-EMPLOYED

SPSV industry members that are in receipt of a PUP or a jobseeker's payment, but who are returning to work part-time may be able to avail of the Covid-19 Part Time Job Incentive for the Self-Employed.

If you are returning to work part-time (less than 24 hours per week) and earn more than €480 per month, this scheme may be of interest to you. Of note, there is no income limit on your part-time earnings under this scheme.

Further information can be found [here](#).



COVID-19 ENHANCED ILLNESS BENEFIT

Self-employed persons can avail of the Covid-19 Enhanced Illness Benefit when diagnosed with Covid-19, or instructed by a doctor or the HSE to self-isolate. The payment is €350 per week.



Further information, including details of the applicable terms and conditions, can be found [here](#).

COVID-19 BUSINESS LOAN SCHEME

The COVID-19 Business Loan Scheme from MicroFinance Ireland provides for loans of between €5,000 and €25,000 to micro-businesses including sole traders such as self-employed SPSV operators. There are zero repayments and 0% interest for the first 6 months and the equivalent of an additional 6 months interest-free subject to certain terms and conditions. Additionally there are no penalties for early repayment. Eligibility criteria apply.

Further information on this scheme can be found [here](#).

COVID-19 CREDIT GUARANTEE SCHEME

The COVID-19 Credit Guarantee Scheme offers loans for working capital/liquidity and investment purposes from €10,000 to €1 million for terms of up to five-and-a-half-years. Providers will offer loans under the scheme at a reduced interest rate compared to conventional lending. Eligibility criteria apply.

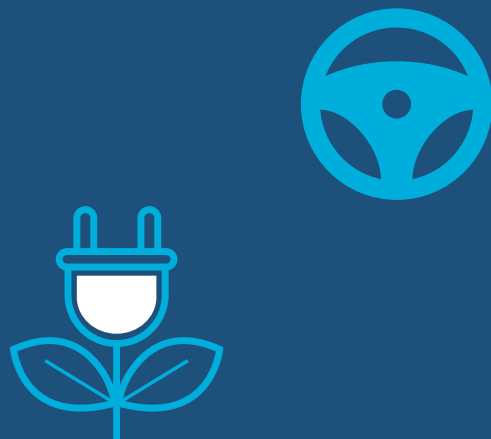
Further information on this scheme can be found [here](#).



eSCRAPPAGE SCHEME AND ESPSV GRANT

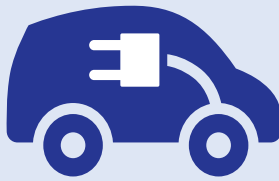
In the recent Budget for 2021, the Minister for Transport announced an allocation of €15 million to support existing SPSV licence holders in replacing vehicles which are approaching the maximum permissible age limit with zero-emission capable electric alternatives. This will further the State's green agenda and assist licence holders financially. NTA will administer the eScrappage Scheme. Further details on this eScrappage scheme are expected in the coming weeks from the Department of Transport.

The current eSPSV Grant will continue in 2021. Further information on this scheme can be found on the [forms and guides](#) section of our website.



DEDICATED ELECTRIC VEHICLE CHARGERS

The roll-out of dedicated electric vehicle (EV) taxi recharging points has been confirmed by the Department of Transport. SPSV-dedicated EV chargers are currently being installed in train stations at Dublin (Heuston), Limerick (Colbert) and Cork (Kent) and will be operational by 2021.



“Taxis have always been an important link in the end to end Journey for many Rail passengers. Therefore we are delighted to be able to deploy a number of rapid 50kW electric vehicle chargers dedicated to taxis at Heuston, Limerick and Cork stations. Railways are a low carbon friendly transport mode and by encouraging taxi drivers to move across to this new technology, we are offering our passengers the option of a zero emission last mile trip when they disembark from the train. This project has been facilitated by the Department of Transport Climate Change unit and this I am sure this partnership approach will continue and see this equipment being deployed at other locations in the near future”. - Jim Meade [CEO, Irish Rail]

PUBLIC CONSULTATIONS

NTA recently held two public consultations on draft COVID-19 emergency regulations to support the SPSV. The draft emergency regulations seek to:

- waive standard SPSV vehicle licensing renewal fees in 2021;
- waive late renewal fees until 12 June 2021, and significantly reduce late renewal fees for the remainder of the year; and
- extend the final operation date of vehicles due to reach their end of life in 2021.

The majority of submissions supported the proposed emergency regulations and a final report is expected in the coming weeks. The regulations are anticipated to complete the statutory approval process prior to year-end and come into effect on the 1st January 2021.

TAXI INDUSTRY & CONSUMER SURVEY



The Driver (500) and User (1026) surveys carried out in September and October yielded the following findings.

COVID hygiene and safety

92%

of consumers reported they felt safe when taking their most recent journey in a taxi

66%

of drivers confirmed they wear a face covering while operating; 74% of users reported their driver wore a face covering

53%

of drivers request that passengers wear face coverings while travelling in their SPSV 73% of users reported wearing a face covering

Approximately **50%** of drivers surveyed have installed temporary dividing screens; 64% of consumers reported the vehicles they travelled in had a temporary dividing screen installed

51%

of SPSV operators request passengers to sit in the rear of the vehicle

49%

of SPSV operators increase ventilation by keeping windows open

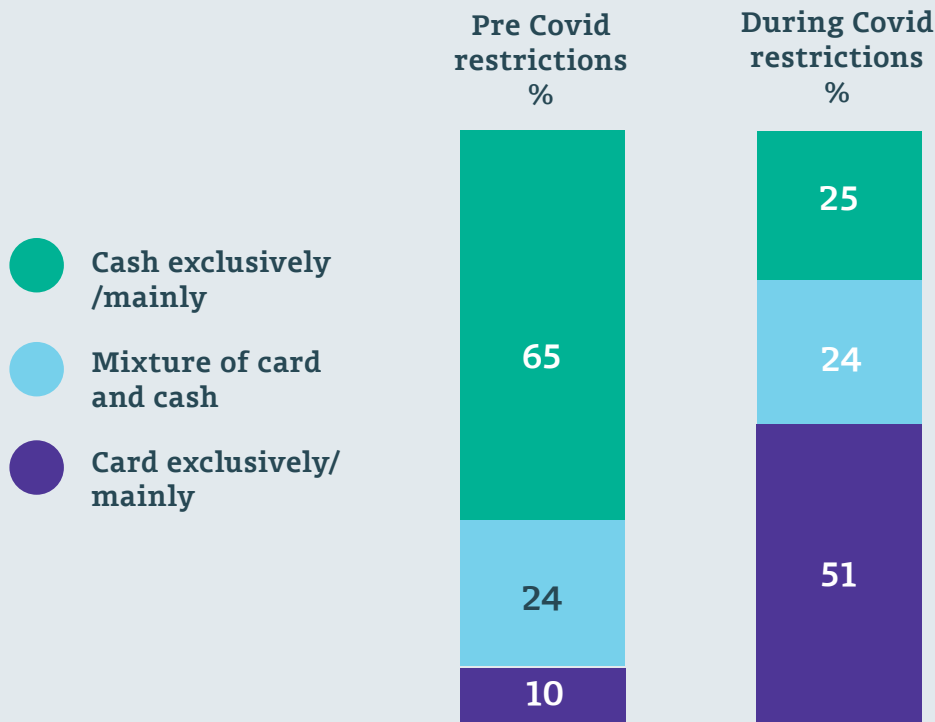
TAXI INDUSTRY & CONSUMER SURVEY

Payment methods

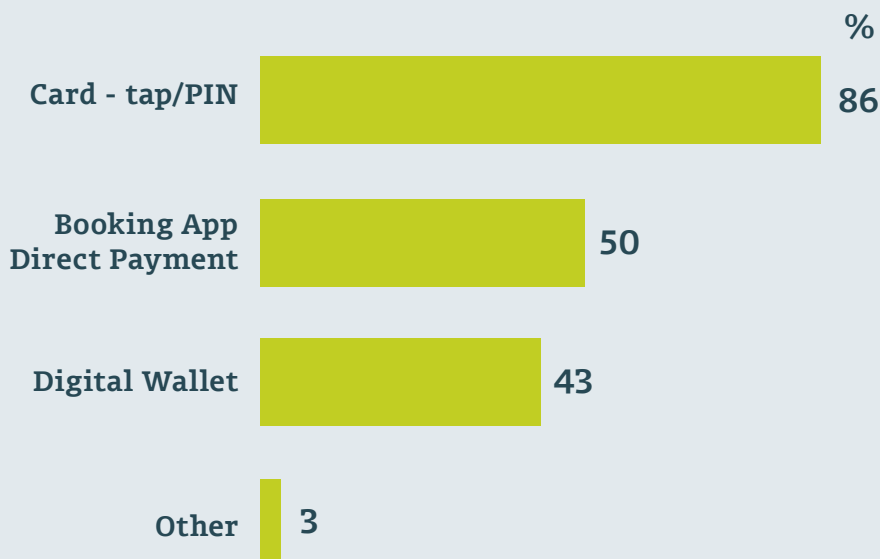
- 89% of SPSV operators surveyed either facilitate cashless payment at present or were open to offering a cashless payment facility in the future



How do taxi users generally pay for taxi usage?



What payment types should be available?



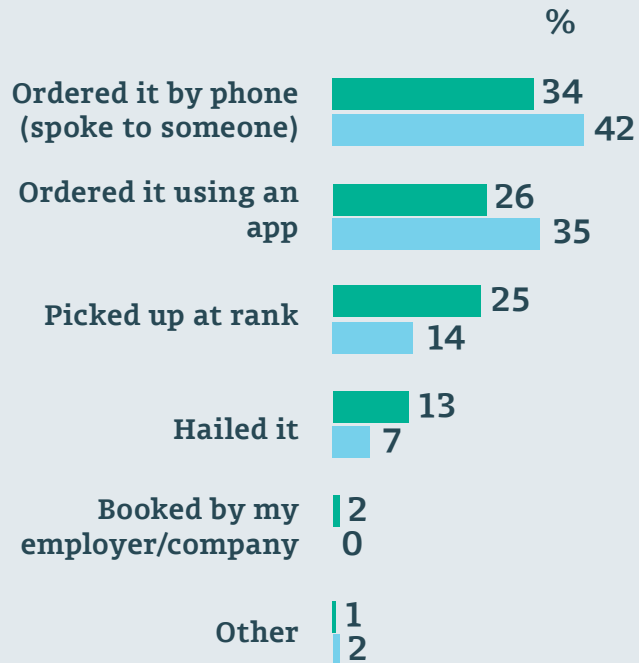
TAXI INDUSTRY & CONSUMER SURVEY

Current taxi usage norms?

Since the beginning of the COVID-19 pandemic, there has been a notable increase in pre-booking by telephone call or booking application. By comparison, the number of consumers who reported hailing a taxi or picking-up a taxi at a rank has declined.

Methods used to get taxi

- Pre Covid restrictions
- During Covid restrictions

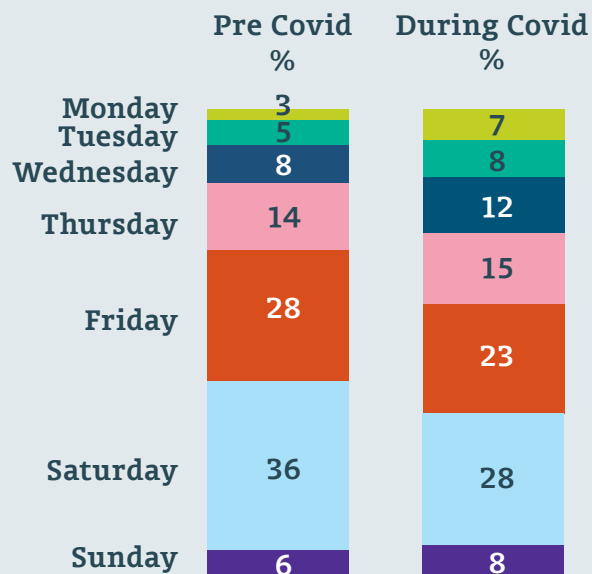


Taxi usage comparison

The busiest days for SPSVs remain relatively unchanged when comparing pre and post COVID-19 pandemic trends, with higher demand on Fridays and Saturdays.

However, when comparing the times when SPSVs are most in-demand, a notable increase in the period from 14:00 – 19:59 is evident.

Day of the week

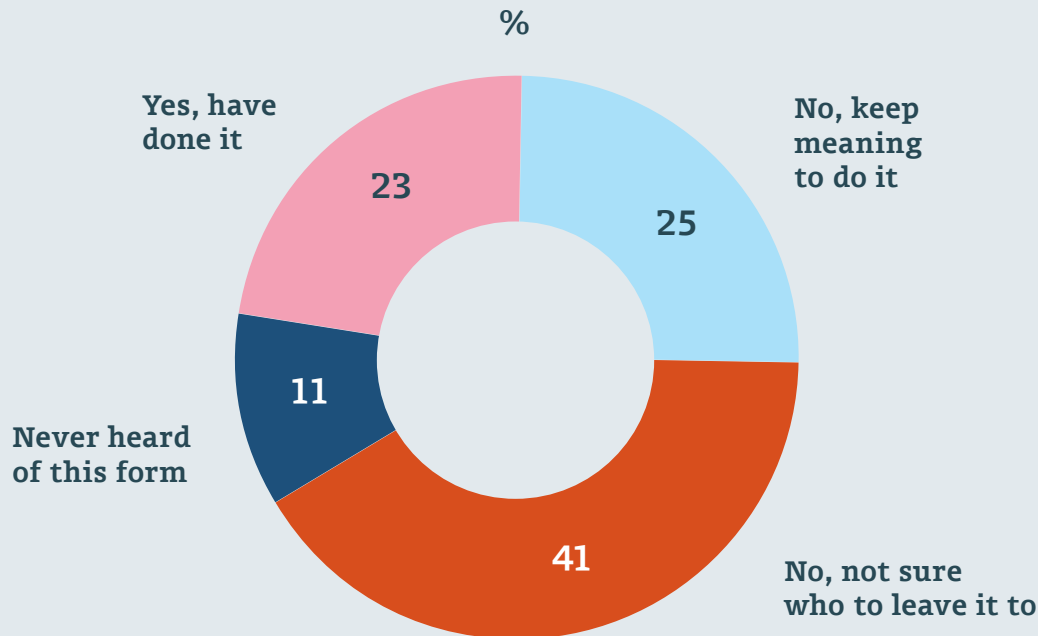


Time of Day

Time of Day	Pre-Covid %	During Covid %
06:00 - 07:59	3	3
08:00 - 09:59	5	4
10:00 - 11:59	8	8
12:00 - 13:59	7	8
14:00 - 15:59	7	11
16:00 - 17:59	9	10
18:00 - 19:59	12	16
20:00 - 21:59	19	12
22:00 - 23:59	17	16
00:00 - 03:59	12	12
04:00 - 05:59	1	1

TAXI INDUSTRY & CONSUMER SURVEY

89% of SPSV vehicle licence holders know how to pass on their vehicle licence



Only 11% of vehicle licence holders said they did not know that they must complete an NTA nomination form to pass on their licence when they die - but only 23% have done it. *This cannot be done in a will or by letter and it must be done before the current owner dies.* The form is issued at each suitability inspection. A free, simple process is in place. You can nominate any adult or company. They do not have to be in the SPSV business or related to you. You can change your mind and complete another nomination form if circumstances change. At the time of the nominated person's application, they have to adhere to legal criteria in the same way as you do now – read the guide [here for further information](#).

CHRISTMAS & NEW YEAR OPENING HOURS



The SPSV Information Line and Inspection Centres will be closed on the following dates:

- 24th - 28th of December inclusive; and
- 1st of January 2021.

NTA encourages you to keep up to date on industry matters by visiting the SPSV Latest News section of the website and to maintain adherence to current

Government and Public Health guidance.

Wishing you a safe and peaceful Christmas from the National Transport Authority.

