



# BUS CONNECTS CORK

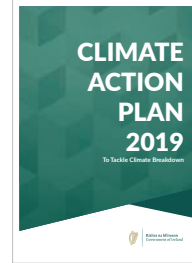
SUSTAINABLE TRANSPORT FOR A BETTER CITY.



# What is BusConnects?

BusConnects is the NTA's programme to greatly improve bus services in Irish cities. It is a key part of the Government's policy to improve public transport and address climate change in cities across Ireland. BusConnects is included in the following Government policy strategies:

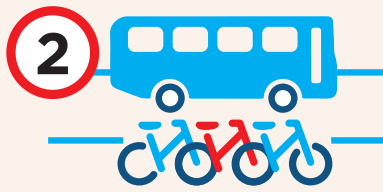
- The National Development Plan 2018 - 2027;
- Cork Metropolitan Area Transport Strategy 2040 (CMATS)
- The Climate Action Plan 2019.



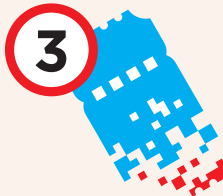
BusConnects Cork is a programme of nine measures to fundamentally transform Cork's bus system, so that bus commuting will become a viable and attractive choice for employees, students, shoppers and visitors. BusConnects Cork aims to overhaul the current bus system in the Cork region by:



**1 Redesigning the bus network**



**2 Building a new network of bus corridors and cycle lanes**



**3 Implementing state of the art ticketing system**



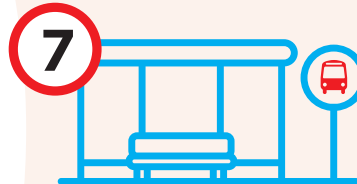
**4 Implementing Cashless payment system**



**5 Simpler fare structure**



**6 New bus livery**



**7 New bus stops and shelters**  
with better signage and information



**8 New Park & Ride sites in key locations**

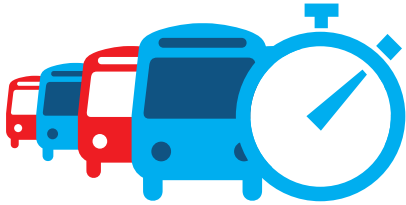


**9 Transitioning to a new zero emissions bus fleet**

# What are the aims and objectives of BusConnects?

To provide enhanced walking, cycling and bus infrastructure on key access corridors in the Cork region, which will enable and deliver efficient, safe, and integrated sustainable transport movement along these corridors.

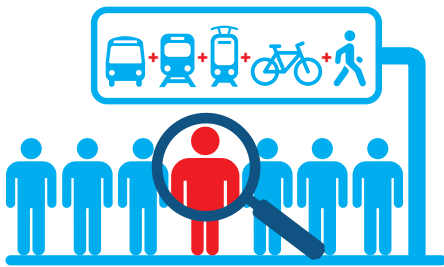
## Objectives:



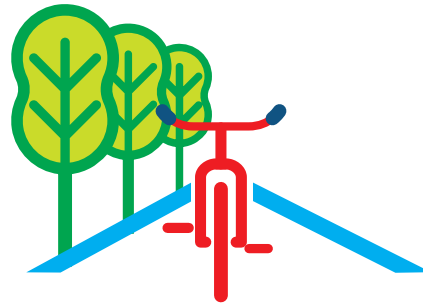
**Enhance the capacity and potential of the public transport system** by improving bus speeds, reliability and punctuality through the provision of bus lanes and other measures to provide priority to bus movement over general traffic movements;



**Support the delivery of an efficient, low carbon and climate resilient public transport service**, which supports the achievement of Ireland's emission reduction targets;



**Improve accessibility to jobs, education and other social and economic opportunities** through the provision of improved sustainable connectivity and integration with other public transport services; and



**Enhance the potential for cycling by providing safe infrastructure for cycling**, segregated from general traffic wherever practicable;



**Enable compact growth, regeneration opportunities and more effective use of land in Cork**, for present and future generations, through the provision of safe and efficient sustainable transport networks;



**Ensure that the public realm is carefully considered** in the design and development of the transport infrastructure and seek to enhance key urban focal points where appropriate and feasible.

# Why does Cork need BusConnects?

BusConnects Cork will deliver a transformation of the bus network for the city and surrounding areas. A step change in the use of sustainable modes is required to enable Cork to reach its potential as the fastest growing city in Ireland. BusConnects Cork will also facilitate an increasingly important interchange service between the InterCity, suburban rail and light rail stations and the Park and Ride network.

## 1. Traffic Congestion

Cork City plays a pivotal role as the major regional centre for employment, education, retail and leisure for a large geographical area. Existing bus priority in Cork City is severely limited, with only 14km of bus lanes currently available. Prioritising bus services over general traffic will allow for a more frequent and reliable bus network, which in turn could decrease the number of private cars on the road.



The Cork Metropolitan Area (CMA) has a population of more than **305,000 people making an average of 820,000 trips each weekday.**



**74%** of trips made by car



**20%** walking



**5%** public transport



**1%** cycling

Walking and cycling infrastructure in the Cork Metropolitan Area will also be improved, providing safe streets for cyclists and pedestrians and allowing for more alternatives to private cars, and contribute to a more attractive and vibrant city.

## 2. Addressing Climate Change

Moving people from cars onto sustainable transport is essential not only to address congestion, but also in reducing CO2 emissions. BusConnects Cork will serve existing and future passengers in a more sustainable and environmentally friendly way. Reducing the need for private cars and moving more people to public transport is a key part of tackling climate change. Tackling the challenges of climate change is a national priority and BusConnects will contribute significantly to that objective.

## 3. Better Connectivity

BusConnects Cork will also deliver better interchange facilities with the Cork Suburban Rail Network, proposed Light Rail network and the proposed Park and Ride services, allowing more people to travel to more places, faster and easier than is currently possible.

# What are we proposing?

## New Bus Network

Futureproofing Cork's public transport network to meet rapidly growing demand is a priority for the National Transport Authority. The review and redesign under the BusConnects Cork Programme will create an efficient network that will allow more people to gain quick access to more places in the city.

Futureproofing the public transport network of Cork city through a series of public consultations, the BusConnects Cork team will deliver a New Bus Network for the CMA that will serve the community in a better, more efficient way. The new network will be supported by new bus livery, new park and ride facilities and the proposed Core Bus Corridors.

## Core Bus Corridors

The new network will be supported by Core Bus Corridors which will allow for better bus priority and better cycling and walking infrastructure. There are 13 potential Core Bus Corridors (CBCs), including one Orbital corridor currently being studied by the design team. These are as follows:

- **CBC 1** Dunkettle to City Centre via Tivoli and Kent Station
- **CBC 2** East of Mayfield to City Centre via Montenotte
- **CBC 3** Ballyvolane to City Centre via Montenotte
- **CBC 4** North of Dublin Hill to City Centre via Blackpool
- **CBC 5** Hollyhill / Apple to City Centre via Shandon area.
- **CBC 6** West of Ballincollig to City Centre via Mardyke
- **CBC 7** West of Bishopstown to City Centre.
- **CBC 8** Wilton to City Centre
- **CBC 9** Cork Airport to City Centre via Turners Cross area
- **CBC 10** South of Douglas (N28) to City Centre via Douglas
- **CBC 11** Jacobs island to City Centre via Balinlough
- **CBC 12** Mahon to City Centre Via Balintemple
- **CBC O** Orbital corridor - Cork University Hospital, Western Road, Hollyhill, Blackpool, Mayfield, Jack Lynch Tunnel, Mahon point, Douglas village and Blackash to Cork University Hospital

## What are the next steps?

A review of the current bus services will be undertaken by transport specialists Jarrett Walker & Associates which will include a public consultation process on a draft revised network. Specialist design service providers have been appointed to develop concept designs for the Core Bus Corridors (CBCs) that will support the efficient running of the bus services in the City. They will also include the provision for bus priority and safe cycle and pedestrian facilities. Once work has been sufficiently developed in assessing these routes, the proposals will be published and will be subject to public consultation.

