

# Connecting Ireland

## Better Public Transport Across Rural Ireland



**This is an Easy to Read information leaflet.**

**October 2021**

# Connecting Ireland – Better Public Transport Across Rural Ireland



Connecting Ireland is a plan for public transport in Ireland.

Connecting places means joining them up.



This plan was put together by the National Transport Authority.



The plan wants to make it easier for people to get around, especially in rural areas.

A rural area is in the countryside.



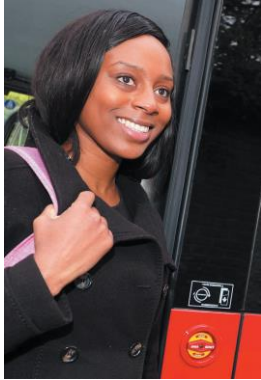
There will be more public transport services between villages and towns.



Public transport will link rural villages and towns to larger towns and cities.



The plan will make changes to give a better public transport system.



Public transport will bring people in rural areas where they want to go, when they want to get there.

# Who is the National Transport Authority?



The National Transport Authority was set up in 2009.  
It is also known as the NTA.



An Roinn Iompair  
Department of Transport

The NTA works under the Department of Transport.



We put together plans for a good quality,  
accessible transport system.



The transport system should be good value for  
money.



Transport plans need to think about the  
environment too.



The NTA looks after public transport in cities.  
We also look after public transport in local towns and villages.



There are TFI Local Link buses in every county.  
These buses help people in rural areas get around.



These are paid for and supported by the NTA.



TFI Local Link buses are managed by people in local offices who know their own communities.



In 2019, our Local Link buses carried 2.5 million passengers.

# Why is Connecting Ireland needed?



The NTA checks the public transport services across the country.

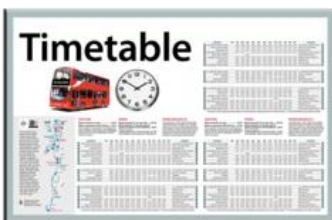


This tells us what is working well and what changes are needed.



Villages should be connected to their nearest big town.

Some areas are well connected, others are not.



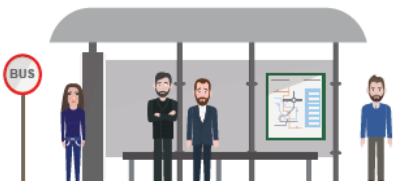
Better timetables could make public transport more useful and easier to use.



Public transport is not just for getting to work or school.

People should be able to use public transport for different things.

# How will Connecting Ireland help rural communities?



More people will live near a bus stop.

A bus will go from this stop to a nearby town or village and back at least three times a day.



There will be new public transport services in rural areas.



There will be over 100 new local centre connections from rural areas.



There will be over 100 new connections to local towns.



There will be over 60 new connections to cities and regional centres.

# Putting our plan together



A number of important things guide our work.



We want more people to be able to use public transport.

We will look at new types of services in rural areas.

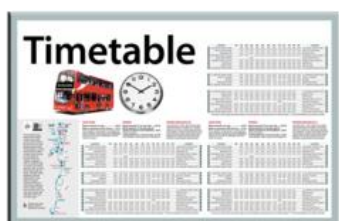


We want services that come more often on busy routes.



We will have more services like the DRT.

This is a door to door service that people in rural areas can book.



We want better timetables so services can link together.



We will timetable services so people can go where they want when they want.

For example, to go to work, school, hospital, shops, and home again.



Public transport should give people the chance to socialise and to go shopping.

This might be later in the day or in the evening.



Public transport should run 7 days a week.



We need local transport to link with public transport in towns and cities.

This will help people that need to do long trips.

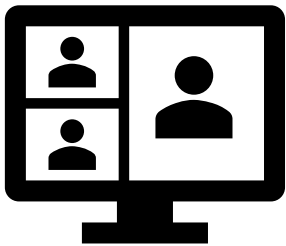


Public transport should serve important places such as hospitals, train stations, colleges.

# Working together



We will talk to the public about our plan.



We have already held workshops with Local Authorities and national organisations.



This helped us understand the gaps in local public transport.



It is important that we talk to and work with others on Connecting Ireland.

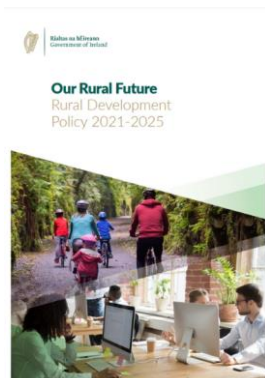
This will help us put the plan together and think about the future.



Connecting Ireland will think about other important policies and plans for Ireland.

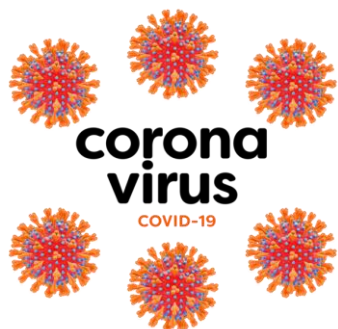


For example, the National Development Plan, Climate Action Plan, and the Programme for Government 2020.

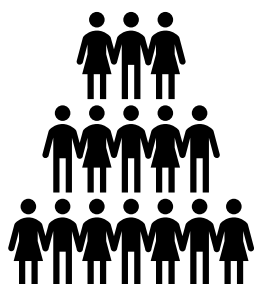


Better rural transport services is an important part of the Rural Development Policy 2021-2025.

# COVID-19 and public transport



Covid-19 was one of the biggest challenges that public transport ever faced.



It might take a while before the same number of people use public transport as before Covid-19.



It is important that we try to get back to normal as soon as we can.

Connecting Ireland is an important part of this.



We want to get even more people to use public transport.

We will do this by having more and better services.

# We want to hear from you



Our public consultation starts later this year.  
This means listening to what you have to say.



We can't meet people face to face but we will talk  
to people through online meetings.



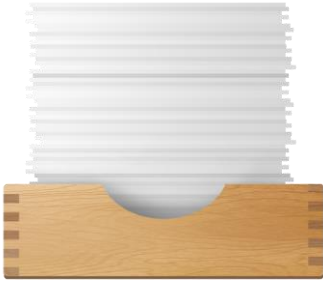
We have an online survey on the Connecting  
Ireland website.

You can use this to give us your views.



We want to know that our ideas are right for your  
local area.

We want to know what else we should think about  
as we design your services.



Once the public consultation is over, we will look at all the information.



This will help us to review our plan.



We would like to start work on Connecting Ireland in 2022 when we have the money.



The NTA will work with different groups and organisations on this plan.

For example, national organisations, bus services, Local Link, and other transport providers.

# More Information



You can get more information on the plan at [www.nationaltransport.ie](http://www.nationaltransport.ie)



There is more information on all our planned changes in the main report.



This report was put together by the National Transport Authority.



Experts by Experience from ACE  
Communication helped with this Easy to Read report.

