

Connecting Ireland

Better Public Transport Across Rural Ireland



**This is an Easy to Read version of the main report
from the National Transport Authority.**



October 2021

What is this report about?



Connecting Ireland is a plan for public transport in Ireland.

Connecting places means joining them up.



This plan was put together by the National Transport Authority or NTA.



This plan is very important for people living in the countryside, away from towns and cities.

These people are living in rural areas.



The Connecting Ireland plan will make it easier for people living in rural areas to get around.



It will make public transport in rural areas more useful for more people.

1

Connecting Ireland is the first public transport plan of its kind in Ireland.

It will make changes to give a better public transport system in rural areas.



Public transport will link rural villages and towns to larger towns and cities.



You may be able to go straight from one place to another, or may have to change services to get from a town to a city.



There will be new transport services for rural areas.



There will be more DRT services.

The DRT is a door to door service that people in rural areas can book.

How will the NTA make public transport better?



The NTA was set up in 2009.

We manage the development of the public transport network.



Our main job is to plan the best public transport service possible for the money we get.



We give money to people that run public transport services and check these services.



We work with people running transport services to make them better and to bring in new services.



We give licences to public bus services.



These services are sometimes called commercial bus services.

They do not get any money from the NTA.



These bus services are an important part of the public transport network in cities, towns, and rural areas.



We pay for TFI Local Link buses.

These are very important for rural transport.

The service is managed by people in local offices.



These different services will all play an important part in the Connecting Ireland plan.

Why is Connecting Ireland needed?



A better public transport service in rural Ireland will mean:



Better connections between communities.



More people will live near a bus stop.

A bus will go from this stop to a nearby town or village and back at least three times a day.



More people will be able to use the DRT service.



There will be over 100 new local centre connections from rural areas.



There will be over 100 new connections to local towns.



There will be over 60 new connections to cities and regional centres.



Better rural transport services means more people can work in towns and villages.
People will also be able to get to a job in the city if they need to.

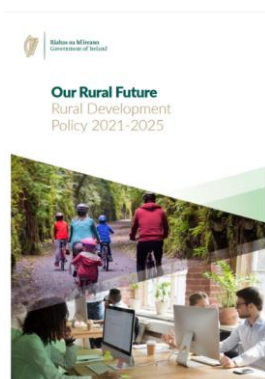
Connecting Ireland and National Policies



Connecting Ireland will think about and be part of other important policies and plans for Ireland.

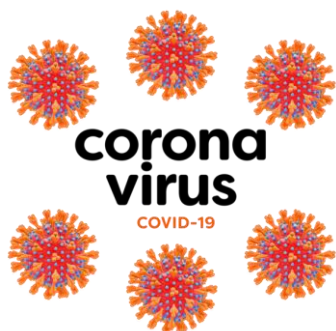


For example, the National Development Plan, Climate Action Plan, and the Programme for Government 2020.

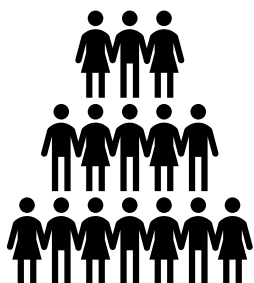


Better rural transport services is an important part of the Rural Development Policy 2021-2025.

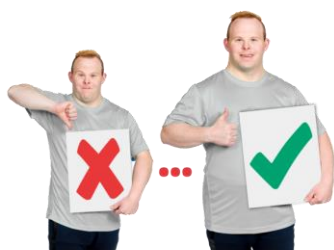
Getting more people to use public transport



COVID-19 was one of the biggest challenges that public transport ever faced.



It might take a while before the same number of people use public transport as before COVID-19.



We want to get even more people to use public transport.

We will do this by having new and better services.



This is important for the environment and for the way we want to live in Ireland in the future.



Between 2012 to 2019, more people started using public transport.



More people were using rural transport services like TFI Local Link.



The NTA looked at the public transport services in every county in Ireland.



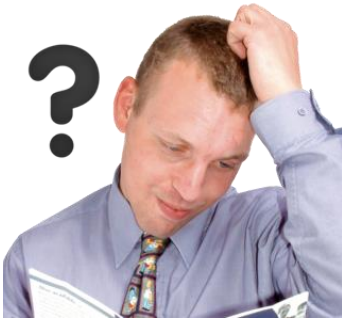
We checked if public transport could take people where they wanted to go, when they wanted to go.



We know what services there are on different days and at different times.



We know if there are gaps in the service that mean public transport is not available.



It is difficult to organise public transport services that meet everyone's needs and give good value for money.



We need to think about older people in rural areas that may have mobility difficulties.

**BUS
CONNECTS**

BusConnects is our plan to make bus services better in Irish cities and towns.

We also want to have local town bus networks.

If a person wants to make a journey, they want to know:

Can I get there any day I want?

Can I get home the same day?

How long does it take to get there?

Will I get there on time?



How much do I have to pay?

Do I have to change somewhere else to get there?

What we know so far



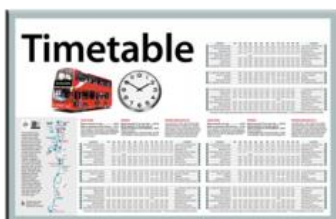
There are gaps in the public transport network.
Some people do not have the service they need.



4 out of 10 villages are not connected to a big town nearby.



We need new services for people that live far from regular transport services.



We need better timetables with services that run at all times of the day, evening, and weekend.



We need to timetable services so people can go where they want when they want.
For example, to go to work, school, hospital, shops, and home again.



Public transport should run 7 days a week.

There should be more services on busy routes.



We need local transport to link with public transport in towns and cities.

This will help people that need to do long trips.



Public transport should go to important places such as hospitals, train stations, colleges.



Public transport should give people the chance to socialise, to go shopping, or to use healthcare.



A good public transport system can support tourism in rural areas.



Rail services are a very important part of the public transport services in Ireland.

We should encourage more people to take the train for long journeys.



We need better rail services and stations.

Rail services should link with our bus services.



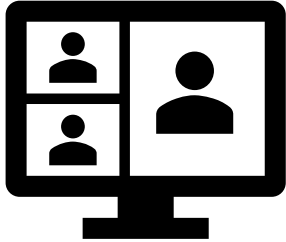
We depend too much on our cars to get around. This causes traffic problems and damage to the environment.



We need to make sure that people are more important than cars in our public spaces.



A good public transport system is important to help us get back to normal after COVID-19.



We held workshops with local authorities and national organisations to talk about our plan.



This helped us understand the gaps in local public transport.

It helped us understand how different villages, towns, and cities work and what they are used for.



We must all work together and share information so we can have a better public transport network.



We must listen to different views and ideas.

Things will change as we move on from COVID-19, for example, people working from home.

We want to hear from you



We will talk to the public later this year.
We will listen to what you have to say.



We can't meet people face to face but we will talk to people at online meetings.



We have an online survey on the Connecting Ireland website.
You can use this to give us your views.



We want to know that our ideas are right for your local area.
We want to know what else we should think about as we design your services.

More Information



You can get more information on the plan at www.nationaltransport.ie



There is more information on all of the changes in the main report.



This report was put together by the National Transport Authority.



Experts by Experience from ACE
Communication helped with this Easy to Read report.

