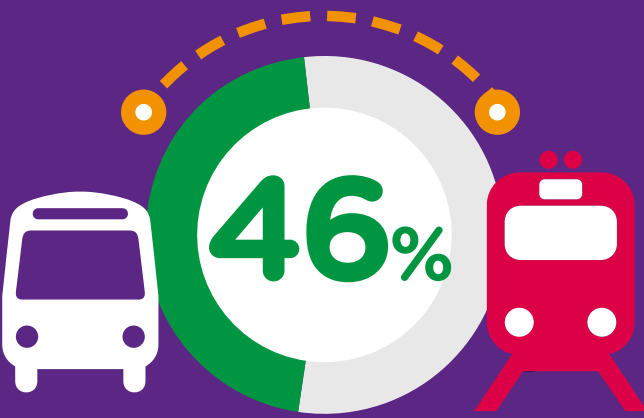


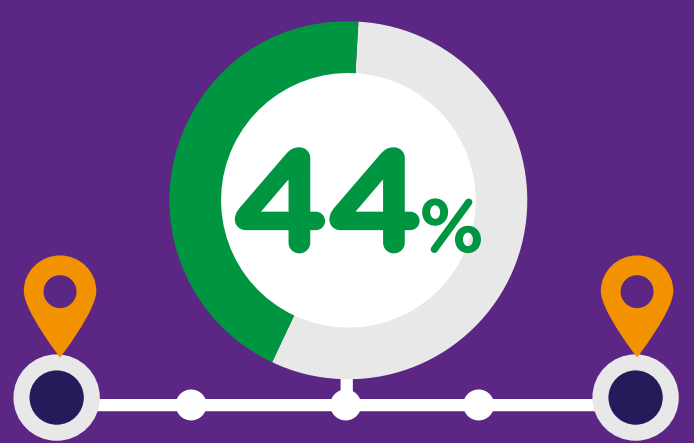
Public Consultation Feedback

The Connecting Ireland Rural Mobility Plan is an ambitious programme of enhancements to create a more integrated, accessible, and sustainable public transport network for rural Ireland.

Last year, over 3,000 people participated in a public consultation process where the NTA asked for your views on the Connecting Ireland proposals. Responses came from a diverse, nationwide audience and findings from the survey tell us that:



of respondents said they want better connections to other services



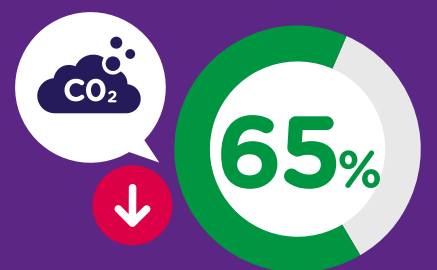
of respondents would like to access a wider range of destinations via public transport



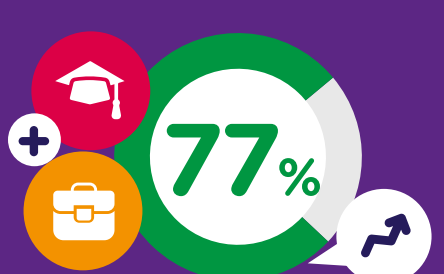
of respondents would like more frequent services on their current public transport routes



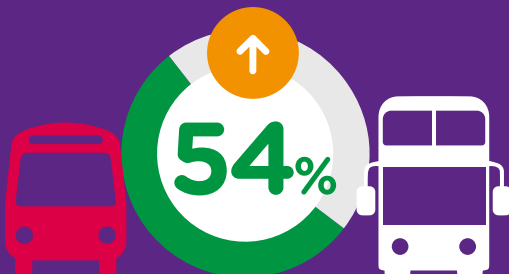
of respondents would like bus stops closer to where they live



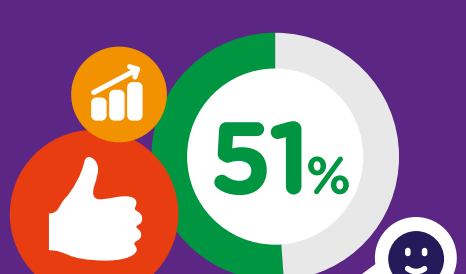
of respondents said that they feel that Connecting Ireland will lead to a reduction in car dependency and transport emissions



of respondents said that they believed Connecting Ireland will provide greater access to services, work & educational opportunities



of respondents said that they would use public transport more when Connecting Ireland is delivered



of respondents told us that the proposed enhancements for their area under the Connecting Ireland plan is an improvement on what's already there

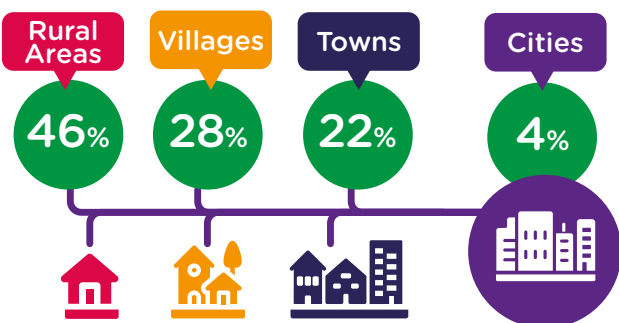


of respondents told us that Connecting Ireland will help tackle rural isolation



Response Overview

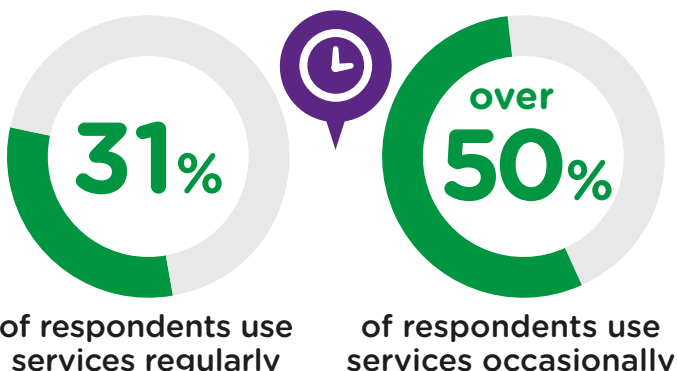
We heard from all places



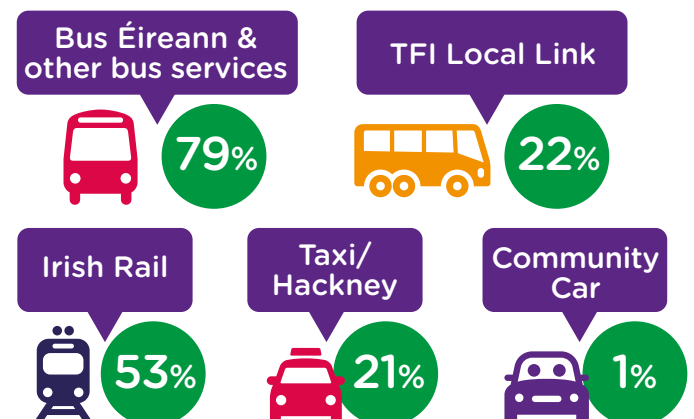
We heard from all ages



We heard from respondents who use public transport at different frequencies



We heard from respondents who use different types of public transport



To find out more about the Connecting Ireland Rural Mobility Plan
Visit: Nationaltransport.ie/connecting-ireland